

RSASA Members' Spring Exhibition

Perception Catalogue

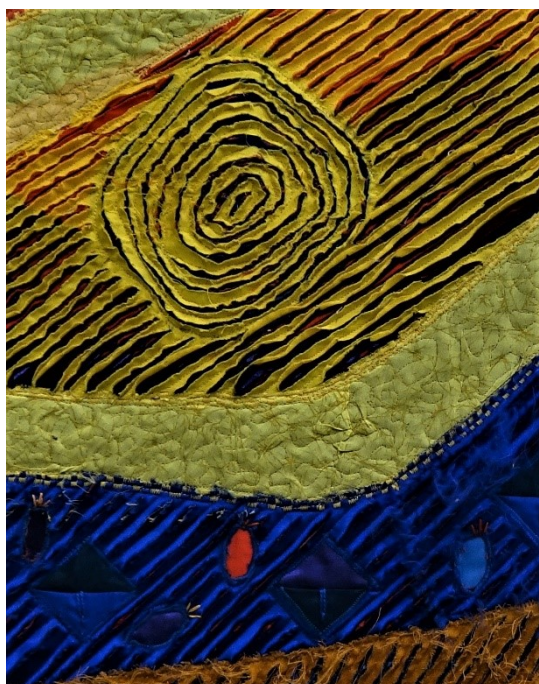


Image: Finke

16 October – 14 November 2020

RSASA Gallery: Level 1, Institute Building, Cnr North Tce & Kintore Ave, Adelaide

RSASA Office: 0 8232 0450 www.rsasarts.com.au

e: rsasarts@bigpond.net.au

NFS = Not for Sale POA = Price on application

F = Fellow, A = Associate, M = Practicing Member, S = Student

* = Merit Award + = Highly Commended # = Commended ! = Excellence

No	Name	Title	Medium & Size	Price \$
1	Jeanette BENSEN (M)	<i>Captured and Restrained</i>	Acrylic 92x92cm	480
2	Barbara PITT (M)	<i>Creek Bed Cuppa</i>	Acrylic 50x60cm	450
3	Elizabeth SOLICH (M)	<i>No To Plastic Forks & Knives</i>	Oil on canvas 40x30cm	420
4	Colleen DUFFY (F)	<i>Winter Festival - Vaughan Place</i>	Pastel 83x62cm	480
5	Catherine NOBLE (M)	<i>Nola Seidel-Reflection</i>	Oil 50x42cm	1,000
6	Farahnaz GHOFRANI MAJELAN (F)	<i>Portrait 1</i>	Monoprint 35x25cm	350
7	Vikki WALLER (F)	<i>This Way Forward</i>	Mixed fabrics & cotton threads - Bear photos by Janko Ferlic & beads & buttons. 63x91cm	800
8	Roe GARTELMANN (F)	<i>Boolcunda Rocks</i>	Mixed media 62x78cm	680
9 +	Roe GARTELMANN (F)	<i>Blinman Hills</i>	Mixed media 58x78cm	650
10	John WHITNEY (F)	<i>Shed 7</i>	Lead Pencil drawing 62x53cm	600
11	Peter WESTERHOFF (F)	<i>Lunch at Victor Harbor</i>	Oil on canvas 40x50cm	550
12 #	Heather LORENZON (F)	<i>Winter into Spring</i>	Acrylic 69x58cm	550
13	Heather CLEGG (F)	<i>The pine plantation burnt</i>	Oil on canvas 135x170cm	3,000
14	Marilyn JACOBS (F)	<i>Irises</i>	Watercolour 80x60cm	680
15 +	Bev BILLS (F)	<i>What to hold</i>	Textile - mixed-stretched over canvas 50.75x61cm	450

16	Graham DUNSTAN (M)	<i>Equal Opportunity</i>	Oil on canvas 62x47cm	620
17	Marilyn JACOBS (F)	<i>Slow Motion</i>	Watercolour 70x56cm	580
18	Terence MACDERMOT (M)	<i>Transition</i>	Mixed media 80x106cm	700
19	Susan PETER (F)	<i>Royal Spoonbills</i>	Oil 59x84cm	450
20	Sandra EARLE-RUSSO (M)	<i>It's a Wave</i>	Oil 122x122cm	900
21	Cathi STEER (F)	<i>Cormorants</i>	Pastel 75x94cm	1,000
22 * #	Terence MACDERMOT (M)	<i>Fleurieu Idyll</i>	Mixed media 95x95cm	800
23!* 24	Joshua BALDWIN (M)	<i>The Birdwatcher</i>	Oil 60x70cm	1,500
24	Joshua BALDWIN (M)	<i>Portrait of Phil</i>	Oil 56x46cm	1,200
25	Sheila WHITTAM (F)	<i>The Cedars Eulogy</i>	Oil on board 85x105cm	1,800
26	Peter WESTERHOFF (F)	<i>Wil Heidt "Reflections of '76"</i>	Oil on canvas 75.5x60cm	NFS
27	Adam ZAKNIC (M)	<i>The Sun and I</i>	Oil on aluminum panel 60x76cm	600
28	Leonid OLIJNYK (F)	<i>Les Sylphides</i>	Fine Art Photography 91.5x141cm	650
29	Alifiya HAIDERMOTA (M)	<i>Untitled 1</i>	Photograph 20x30cm	250
30	Alifiya HAIDERMOTA (M)	<i>Untitled 2</i>	Photograph 20x30cm	250
31	Leonid OLIJNYK (F)	<i>Duet</i>	Fine Art Photography 88x36cm	280
32	Liz STEVESON (F)	<i>Wild Scraps:Kites</i>	Stitched textile collage 87x54cm	430
33	Elizabeth SOLICH (M)	<i>The Culture Clug</i>	Oil on canvas 40x50cm	450
34	Hamish FLEMING (M)	<i>Spark (Dear Cloud)</i>	Acrylic-oil & gold leaf on ply 31x21cm	750
35	Hamish FLEMING (M)	<i>Aftermath (Self-portrait - October)</i>	Oil paint stick-oil-acrylic & charcoal on ply 39x29cm	750
36 * #	Stephanie WRIGHT (M)	<i>Bloom</i>	Oil on canvas 25x20cm	290
<p>These are little portraits of my daughter as she transforms from child to young woman. In our times of "tell all" social media I have chosen to maintain a degree of anonymity within these paintings, reflecting the oftentimes mysterious journey she is undertaking.</p>				
37	Stephanie WRIGHT (M)	<i>Cusp</i>	Oil on canvas_25x20cm	290 Diptych 500
38	Roshana RASHEED (M)	<i>Underneath the Mango Tree</i>	Watercolour 23x23cm	180
39	Vikki WALLER (F)	<i>Finke River Gorge MacDonnell Ranges</i>	Mixed fabrics – machine quilted 75x58cm	500
40	Bente ANDERMAHR (M)	<i>Toxic Rust</i>	Fine Art Photography 75x100cm	295
41 * #	Don OSWALD (M)	<i>Fracture</i>	Giclee Photograph 62x51.5cm	510
42	Don OSWALD (M)	<i>Triptych</i>	Giclee Photograph 62x51.5cm	510

43	Swee Wah YEWE (F)	<i>Connected</i>	Acrylic 76x120cm	1,800
44	Roshana RASHEED (M)	<i>Dhobi Ghat - India</i>	Photograph 48x58cm	250
45	John WHITNEY (F)	<i>Shed 17</i>	Coloured Pencil drawing 62x53cm	580
46	David BAKER (F)	<i>I See Red</i>	Fine Art Photography 76x100cm	300
47	David BAKER (F)	<i>Looking at You</i>	Fine Art Photography 46x46cm framed	80
48 #	Philip DAVID (F)	<i>Vali Myers</i>	Oil, 60x80cm	900
49	Thea POPOFF (M)	<i>Chicume</i>	Mixed media 33x30cm	80
50	Deanne HARRISON (M)	<i>Cows in the Meadow</i>	Oil on canvas 28x35.5cm	200
51	Philip DAVID (F)	<i>Mates</i>	Oil on board, 90x60cm	900
52	Mitch IANNI (M)	<i>Duck 2</i>	Acrylic on canvas 25x25cm	220
53	Mitch IANNI (M)	<i>Duck 1</i>	Acrylic on canvas 25x25cm	220
54	Kay CUNNINGHAM (M)	<i>Beauty of the Upper Reaches - Russell Falls Mt Field NP Tasmania</i>	Pastel 39x43cm	350
55	Kay CUNNINGHAM (M)	<i>Iconic Russell Falls - Mt Field NP Tasmania</i>	Pastel 39x43cm	350
56	Deanne HARRISON (M)	<i>Banksia Orange Burdettii with Honeyeaters</i>	Derwent Colour Pencils 36x47cm	200
57	John PALMER (F)	<i>Parrot in & Rec 1</i>	Oil on canvas 30x40cm	400
58	John PALMER (F)	<i>Parrot in & Rec 11</i>	Oil on canvas 32x44cm	400
59	Quoc NGUYEN (A)	<i>Crimson Eve</i>	Watercolour 90x40cm	800
60	Carole BANN (M)	<i>Galah</i>	Metal point (24ct gold & silver) 41.5x37cm	380
61	Shahin AZADEGAN (M)	<i>Whisper</i>	Acrylic on canvas 60x60cm	550
62	Kathleen CAIN (M)	<i>Superb Wren</i>	Graphite & pastel 45x38cm	300
63	Kathleen CAIN (M)	<i>Eastern Robin</i>	Graphite & pastel 45x38cm	300
64	Shahin AZADEGAN (M)	<i>Tranquility</i>	Acrylic on canvas 60x60cm	400
64	Robyn ELMSLIE (A)	<i>Bottlebrush</i>	Photograph 41x34cm	180
65	Robyn ELMSLIE (A)	<i>Nectar Gatherer</i>	Photograph 41x34cm	180
67	Susan PETER (F)	<i>In the Half Light</i>	Pastel 49x41cm	250
68	Bente ANDERMAHR (M)	<i>Cloudy Glass</i>	Fine Art Photography 100x75cm	295
69	Carole BANN (M)	<i>Garlic</i>	Metal point (24ct gold & silver) 46.5x64cm	980
70 +	Quoc NGUYEN (A)	<i>Loyalty</i>	Watercolour 90x40cm	800
71	Margaret TUCKEY (F)	<i>Sunflowers</i>	Watercolour 97x75cm	750
72	Allan GAEKWAD (F)	<i>Reclined</i>	Paper Sculpture 60x23cm	519
73	Frey MICKLETHWAIT (F)	<i>Heroic Fish</i>	Mixed, ceramic, 52 x 14.5 diam cm	370

74	Heather CLEGG (F)	<i>Covid tower</i>	Paint on card 63x24x24cm	450
75 #	Frey MICKLETHWAIT (F)	<i>Profiteer Oil pot</i>	Ceramic, 71 x 23diam cm	600
76 * #	Tushar Kishobahai PATEL (S)	<i>My Head's about to explode</i>	Papier Mache 83x127x53cm	200
77	Bev BILLS (F)	<i>Spikey Swivel</i>	Textile - wire & kumihimo braiding 9 x 31cm	65
78	Bev BILLS (F)	<i>Hands Up</i>	Textile - wire & kumihimo braiding 18x9.5cm	55
79	Makram ISKANDAR (F)	<i>Horses</i>	Terracotta, 30 x 45cm	500
80	Makram ISKANDAR (F)	<i>Nice Girl</i>	Terracotta, 40 1 x 15cm	300

NFS = Not for Sale POA = Price on application
F = Fellow, A = Associate, M = Practicing Member, S = Student

Gallery Hours: Mon – Fri 10.30am – 3.30pm, Sat 1pm – 3.30pm, during exhibitions. **Closed Public Holidays**

Exhibitions coming up in the RSASA Gallery:

RSASA Members' Spring Exhibition: Perception: Sat 17 October – Sat 14 November

RSASA Selection Royale 5: Sat 21 November – Sat 5 December (Ballot Draw) \$100 per ticket

Artworks donated by RSASA Members. Purchase a \$100 ticket from RSASA

RSASA Members' Summer Exhibition: Focus: Sat 12 December – Sat 9 January 2021

(Closed over Christmas)

Vikki Waller (F) Retrospective: Sat 16 January – Sat 6 February



Outside the RSASA Gallery:

The Rising Sun Inn:

An RSASA exhibition. For more information, contact Pip Fletcher 8267 4428, or Rising Sun 8333 0721.

www.therisingsun.com.au Enjoy great meals & view the art, a boutique restaurant and a real homely atmosphere, whilst taking in the artwork. Art works are for sale at 60 Bridge Street, Kensington

Just Us 5 – Artists: Betty Anderson (F), Hugh Adamson (F), Bev Bills (F), David Baker (F), Pat Blucher (F), Carolyn Corletto (F), Colleen Duffy (F), Marilyn Jacobs (F), Bob Landt (F), Heather Lorenzon (F)
Buckingham Arms Hotel, 1 Walkerville Tce, Walkerville

Email: rsasarts@bigpond.net.au

RSASA Gallery: Level 1, Institute Building, Cnr North Tce & Kintore Ave, Adelaide 5000

PO Box 177, Rundle Mall, Adelaide 5000 www.rsasarts.com.au facebook: rsasarts



Social distance



Wash hands



Cough into elbow